

# 2018

## FFT ANNUAL REPORT





# A BRIEF MESSAGE FROM OUR CHAIR, NEIL ANSELL

My thanks to our funders, old and new, who have helped us consolidate our position as one of the leading players when it comes to speaking out for Gypsies and Travellers and working to improve their marginalised position in society.

FFT has had a proactive year, blessed as it is with a stable and dedicated team of staff. It is a dynamic working environment, always quick to look at ways to address new needs as they arise, while never forgetting our core values. It has been an honour to be a part of it, and to see how it has grown in its reach and effect, as it approaches its quarter century as an organisation addressing such a vital need.

## OUR TEAM

Our team is made up of great people from all the Travelling Communities and the settled communities working together.

### TRUSTEES DURING 2017/18

**Neil Ansell**  
Chair

**Dominique Corbett**  
Treasurer

**Judy Pointing**

**Marc Willers**

**Justine Compton**

**Tony Thompson**

**Paola Uccellari**

**Domanic Leveridge**

**Rob Torkington**

**Sarah Mann**  
Company Secretary

### STAFF

**Sarah Mann**  
Co - Director

**Zoe Matthews**  
Co - Director

**Abbie Kirkby &  
Emma Nuttall**

Advice & Policy Manager  
(job-share)

**Michelle Gavin**  
Projects Manager

**Avril Fuller**  
Outreach & Youth  
Co-ordinator

**Marya Sadouni**  
Community Support  
Worker

**Charmaine Valler**  
Community Support  
Worker

**Emma Bray**  
Health Improvement  
Worker

**Suzanna King**  
Finance Officer and  
Crystal's Vardo Project  
Manager

**Shonge Holdgate**  
Finance Officer

**Liz MacPherson**  
Young People's Worker

**Samson Rattigan**  
Community Engagement  
and Youth Worker

**Angela Barnett**  
National Caseworker



**Rosie Fox**  
National Caseworker

**Gemma Challenger**  
National Caseworker

**Victoria Stallwood**  
Project Support Worker

**Ivy Manning**  
Intern /Health  
Improvement &  
Well-being Worker

**Lucy Hetherington**  
Admin Assistant/  
Communications Officer

**Maxine Lambert**  
Traveller Education  
Teacher

**Kieran Wilkie**  
Admin Assistant



### HONORARY PRESIDENT

**Baroness Janet  
Whitaker**

### INTERN

**Betsy Mobey**

### VOLUNTEERS

**Juliet McCaffrey**

**Bev Wells**

**Michelle Polirer**

**Dean Hodge**

**Kathy Brazil**

**Victoria Stallwood**

**Barnie Bamford**



# DIRECTOR'S REPORT

We thank our staff and volunteer team for their great contributions this incredibly busy and productive year.

The core of our work continues to be a practical advice and legal support service to Gypsy, Roma and Traveller communities across the UK, pushing to get a fair deal and equal opportunity.

This year we have grown our reach and influence in pursuit of equality and justice. Using the evidence from our casework, research and outreach work, we are working more closely with policy makers and politicians to address systemic causes of inequality and injustice, both as members of the VCSE Health and Well-being Alliance and more recently in our appointment to Secretariat for the All-Party Parliamentary Group on Gypsies, Roma and Travellers.

In the coming year we will have a strong focus on ensuring Gypsy, Roma and Traveller voices are heard by politicians, policy makers and the wider public and on empowering Gypsies and Travellers in our work and in our organisation. We will also be working with partners to share our research and learning so that the benefits reach even further and every part of British life and to celebrate our rich culture and history.

**Sarah Mann and Zoe Matthews**



## TRAINING JOURNAL AWARD

Our online Gypsy and Traveller Cultural Awareness Training package won the Silver Award in the Not-for-profit category at the prestigious Training Journal Awards 2017.

## SECRETARIAT TO THE APPG FOR GYPSIES, TRAVELLERS ROMA

We were appointed as Secretariat to the All Party Parliamentary Group on Gypsies, Travellers and Roma, helping to get Gypsy, Roma and Traveller voices right into the heart of Parliament.





# VCSE HEALTH AND WELLBEING ALLIANCE

## WE WERE APPOINTED AS ONE OF 21 MEMBERS OF THE VCSE HEALTH AND WELLBEING ALLIANCE

The VCSE facilitates integrated working between the voluntary and statutory sectors; supports a two way flow of information between communities, the VCSE sector and policy leads; amplifies the voice of the VCSE sector and people with lived experience to inform national policy; and facilitates co-produced solutions to promote equality and reduce health inequalities.

## PARLIAMENTARY HEALTH BRIEFING

WE BRIEFED MEMBERS OF THE HOUSE OF LORDS AND HOUSE OF COMMONS ON THE KEY IMPROVEMENTS THAT SHOULD BE MADE TO HEALTH AND SOCIAL CARE SYSTEMS TO ADDRESS HEALTH AND SOCIAL CARE INEQUALITIES FACED BY GYPSY, ROMA AND TRAVELLER COMMUNITIES.



# ACHIEVEMENTS THIS YEAR

HERE ARE  
A FEW OF THE  
PROJECTS WE HAVE  
DONE THIS YEAR  
WHICH HAVE MADE  
A DIFFERENCE.



## INCLUSION HEALTH AUDIT TOOL

In partnership with Homeless Link and as part of the VCSE Health and Wellbeing Alliance, we led the development of an Inclusion Health audit tool for the voluntary sector. This audit tool helps organisations to improve their engagement with the groups experiencing the worst health inequalities in the UK and provides them with a unique and tailored guide so that they can embed action on tackling health inequalities into their everyday activities.

Visit [www.inclusion-health.org](http://www.inclusion-health.org) to take the tool.



# YOUNG VOICES

## OUR ONLINE COMPETITION SHARED YOUNG PEOPLE'S VOICES FAR AND WIDE

**If I were Prime Minister for a day...** "I would build more site for us Travellers because loads of us are in the road. For us Travellers to have more rights in racism in schools."

Jane aged 15  
Romany Gypsy

**If I were Prime Minister for a day...** "I would educate people to not see Travellers as different people but to see them as their friends."

Lyza aged 12  
New Traveller



**YOUNG VOICES EVENT**  
**YOUNG GYPSIES AND TRAVELLERS PEOPLE SPOKE ABOUT THEIR EXPERIENCES IN AN ALL-TRAVELLER PANEL EVENT AT THE LABOUR FRINGE, CHAIRED BY KATE GREEN MP. THE YOUNG PEOPLE WERE INSPIRING AND SHOWED GREAT COURAGE AND DELEGATES WERE VISIBLY MOVED.**

## CRYSTALS VARDOS

Crystal's Vardo play was welcomed by audiences in schools, libraries and young offenders institutions in Anti-Bullying Week and around Holocaust Memorial Day. Gypsy and Traveller children and teachers also helped us craft resources for schools including our "Forgotten Victims" Roma holocaust booklet.



## PARTNERSHIP PROJECT

Women and young people built new skills and confidence through our partnership work with Brighton Table Tennis Club.

**"I LOVE IT HERE BECAUSE IT TEACHES ME HOW TO PLAY PING PONG, SOMETHING I HAVE NEVER DONE BEFORE"**

Diane aged 11





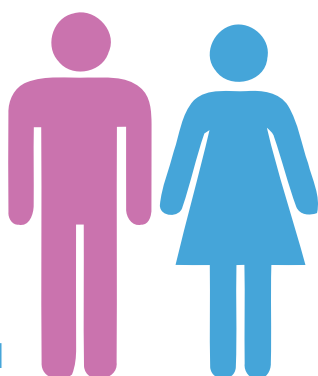
# OUR YEAR IN NUMBERS

**THANKS TO OUR FUNDERS,  
STAFF, TRUSTEES AND  
VOLUNTEERS:**

 **OVER 1000**

**HEALTH, SOCIAL CARE, EDUCATION,  
ACCOMMODATION AND DISCRIMINATION  
ISSUES WERE RESOLVED THROUGH OUR  
CASEWORK AND OUTREACH SERVICES**

**68**  
**PEOPLE**  
**GOT SUPPORT**  
**WITH THEIR**  
**MENTAL HEALTH**



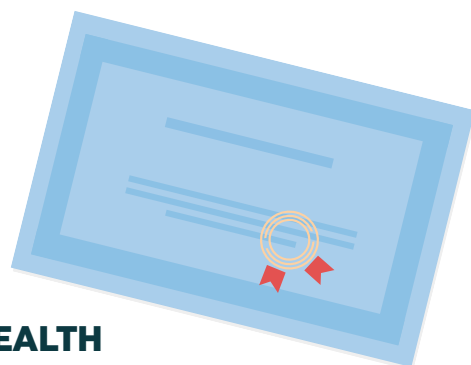
**200**

**OVER 200 GYPSIES AND  
TRAVELLERS HAD THEIR  
VOICE HEARD IN LOCAL  
AND NATIONAL POLICY  
FORUMS**



**94**  
**YOUNG PEOPLE**  
**WERE SUPPORTED TO ACCESS  
OR STAY IN EDUCATION**

**34**  
**PEOPLE**  
**ACHIEVED AN  
ACCREDITED HEALTH  
CERTIFICATE**





**FRIENDS, FAMILIES AND TRAVELLERS**  
**A COMPANY LIMITED BY GUARANTEE**

**STATEMENT OF FINANCIAL ACTIVITIES**  
**(INCORPORATING AN INCOME AND EXPENDITURE ACCOUNT)**  
**FOR THE YEAR ENDED 31ST MARCH 2018**

	Notes	Unrestricted funds £	Restricted funds £	2018 Total funds £	2017 Total funds £
<b>INCOME AND ENDOWMENTS FROM</b>					
Donations and legacies	2	289,409	298,415	587,824	358,307
<b>Charitable activities</b>	4				
Fees, subscriptions and publication sales		61,114	7,998	69,112	68,012
Investment income	3	116	-	116	346
<b>Total</b>		350,639	306,413	657,052	426,665
<b>EXPENDITURE ON</b>					
<b>Charitable activities</b>	5				
Office Costs		17,040	2,120	19,160	13,815
Project Costs		75,381	7,577	82,958	20,476
Staff Costs		201,194	236,316	437,510	374,388
Professional fees		5,375	5,280	10,655	9,985
Property Costs		20,097	627	20,724	19,672
Management charges		(37,916)	38,690	774	-
<b>Total</b>		281,171	290,610	571,781	438,336
<b>NET INCOME/(EXPENDITURE)</b>		69,468	15,803	85,271	(11,671)
<b>Transfers between funds</b>	13	(64)	64	-	-
<b>Net movement in funds</b>		69,404	15,867	85,271	(11,671)
<b>RECONCILIATION OF FUNDS</b>					
<b>Total funds brought forward</b>		112,141	9,844	121,985	133,656
<b>TOTAL FUNDS CARRIED FORWARD</b>		181,545	25,711	207,256	121,985



**238**

**FAMILIES**

**ACCESSED OVER £1/4  
MILLION IN GRANTS AND  
BENEFITS THAT THEY  
OTHERWISE WOULD HAVE  
MISSED OUT ON**

**100**

**OVER 100 PEOPLE  
IMPROVED THEIR HEALTH  
AND WELLBEING THROUGH  
OUR HEALTH EVENTS  
INCLUDING TABLE TENNIS,  
YOGA, HORSE THERAPY  
AND MEN'S MENTAL  
HEALTH GROUPS**



**42**

**FAMILIES**

**RECEIVED SUPPORT  
WITH SAFEGUARDING  
AGAINST DOMESTIC  
VIOLENCE**



**154**

**FAMILIES**

**GOT THE HEALTH  
TREATMENT THEY  
NEEDED**



**FFT is the only national charity working to end racism and discrimination against all Gypsies Travellers and Roma, and to protect their right to pursue a nomadic way of life.**

**We believe in achieving equality of opportunity and a fair deal for all Travellers.**

#### Contact details

**FFT Community Base 113 Queens Road  
Brighton East Sussex BN1 3XG  
Telephone 01273 234 777  
Fax 01273 234 778  
[fft@gypsy-traveller.org](mailto:fft@gypsy-traveller.org)  
[www.gypsy-traveller.org](http://www.gypsy-traveller.org)**

#### Like us on Facebook

**f /FriendsFamiliesandTravellers**

#### Follow us on Twitter

**@GypsyTravellers**

#### Youtube channel

**http://bit.ly/2xDTd8u**

# WITH GRATEFUL THANKS TO OUR FUNDERS AND PARTNERS

**BBC Children in Need, Downlands Educational Trust, Sussex Police and Crime Commissioner, Sport England, Irish Youth Foundation, Paul Hamlyn Foundation and Chalk Cliff Trust.**

Who supported us in our work with Children and Young People

**Lloyds Bank Foundation and Big Lottery Local Sustainability Fund**

Who provided us with much needed core support and support with organisational development

**The Henry Smith Charity, Sussex Community Foundation, Irish Government Emigrant Support Programme and Equality and Human Rights Commission (EHRC)**

Who made our national advocacy work possible

**Esmee Fairbairn Foundation, Tudor Trust, Sussex Police and Arts Council England**

Who helped us take Crystal's Vardo performances and workshops to over 1000 people

**Big Lottery Reaching Communities Fund and European Union Social Fund**

Who enabled us to provide engagement and support in Sussex

**East Sussex County Council, Brighton and Hove City Council, and NHS Brighton and Hove Clinical Commissioning Group and NHS England**

Who made our health outreach, engagement, promotion and research work possible

**Department of Health and Social Care (DHSC), Public Health England (PHE) and NHS England**

Who made our involvement in the Voluntary, Community and Social Enterprise (VCSE) Health and Wellbeing Alliance possible

## OUR FAVOURITE MOMENT

This Christmas, young people from St. Michael's Way Traveller site raised an incredible £300 for a local homeless charity by carol singing in Brighton's busiest shopping centre. The young people had asked our youth workers if they could raise the money instead of going on a festive outing.

